

**PI 3 Kinase p55 gamma Antibody**  
**Rabbit mAb**  
**Catalog # AP90508****Specification**

---

**PI 3 Kinase p55 gamma Antibody - Product Information**

Application	WB, IHC, ICC
Primary Accession	<a href="#">Q92569</a>
Reactivity	Rat
Clonality	Monoclonal

**Other Names**

GRB1, P85A, PI3-kinase p85-alpha subunit, PI3K, PI3K p85-alpha; P55G, PI3-kinase p85-gamma subunit, PI3K p85-gamma,

Isotype	Rabbit IgG
Host	Rabbit
Calculated MW	54448 Da

**PI 3 Kinase p55 gamma Antibody - Additional Information**

Dilution	WB~~1:1000 IHC~~1:100~500 ICC~~N/A
Purification	Affinity-chromatography
Immunogen	A synthesized peptide derived from human PI 3 Kinase p55 gamma
Description	Binds to activated (phosphorylated) protein-tyrosine kinases through its SH2 domain and regulates their kinase activity. During insulin stimulation, it also binds to IRS-1. Highest levels in brain and testis. Lower levels in adipose tissue, kidney, heart, lung and skeletal muscle.
Storage Condition and Buffer	Rabbit IgG in phosphate buffered saline , pH 7.4, 150mM NaCl, 0.02% sodium azide and 50% glycerol. Store at +4°C short term. Store at -20°C long term. Avoid freeze / thaw cycle.

**PI 3 Kinase p55 gamma Antibody - Protein Information****Name** PIK3R3**Function**

Binds to activated (phosphorylated) protein-tyrosine kinases through its SH2 domain and regulates their kinase activity. During insulin stimulation, it also binds to IRS-1.

**Tissue Location**

Highest levels in brain and testis. Lower levels in adipose tissue, kidney, heart, lung and skeletal

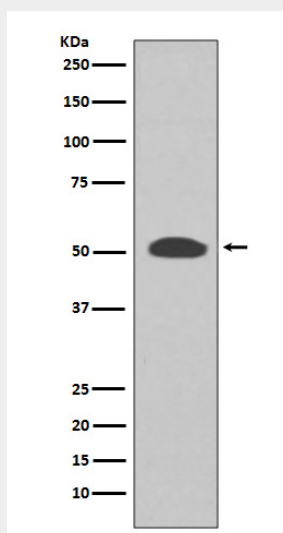
muscle

### PI 3 Kinase p55 gamma Antibody - Protocols

Provided below are standard protocols that you may find useful for product applications.

- [Western Blot](#)
- [Blocking Peptides](#)
- [Dot Blot](#)
- [Immunohistochemistry](#)
- [Immunofluorescence](#)
- [Immunoprecipitation](#)
- [Flow Cytometry](#)
- [Cell Culture](#)

### PI 3 Kinase p55 gamma Antibody - Images



Western blot analysis of PI 3 Kinase p55 gamma expression in SH-SY5Y cell lysate.